

# Capability Statement

## Eye-bot Aerial Solutions

2096 Spooky Hollow Rd  
Lower Burrell, PA 15068

Phone: 724-904-7706

E-mail: JLydick@eye-bot.com

Web: www.eye-bot.com



DUNS No: 011560072

Cage Code: 7WRL3

NAICS Codes:

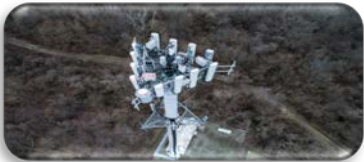
541370 – Surveying and Mapping

541922 – Commercial Photography

Eye-bot Aerial Solutions is a full-service UAV (drone) service provider. We are a fully insured, FAA compliant, safety focused business. All Eye-bot team members are confined space trained and OSHA 10 general industry trained. Our experience makes all the difference. We can easily capture highly actionable maps at a rate of 250 acres per hour if needed. Our top or bottom mounted cameras and collision tolerant drones allow us to put “eyes” on almost anything. We are highly competent with all major photogrammetry software and can integrate seamlessly into your organizations infrastructure. See your assets in the highest resolution 3d models/images. Our diverse team ensures that our clients receive the highest quality, actionable data delivered in the shortest possible turnaround time.

### Industries

Telecommunications



Construction



Power & Utilities



Insurance



Infrastructure



### Our Services

- Vegetation Height Surveys
- 3D Antenna Modeling
- Up-to-date Asset Audits
- Emergency Response Inspections
- Geo-referenced Orthomosaics
- Routine Progress Monitoring
- CAD Drawing Overlays
- As-built 3D Modeling
- 360-degree spherical imaging
- Encroaching Vegetation Inspections
- Thermal Imaging and Scanning
- Utility Pole Inspections and Audits
- Disaster Evaluation Response
- Confined space inspections
- Aerial Damage Assessment
- Accident Recreation
- Disaster Response Imaging
- Non-intrusive Inspections
- Bridge, Dam, and Road Inspections
- Measure Cut/Fill Volumes
- As-built 3D Modeling
- Design Drawing Overlay
- Top or Bottom mounted 42mp camera

### Your Benefits

- Decreased Signal Interference
- Accurate Centerline and Azimuth Measurements
- Real-time Information
- Sharable web portal
- Zero Footprint
- Cut and Fill Measurements
- Finish on time/budget
- Improve efficiency
- Cut overhead by reducing rollouts
- Safely inspect hazardous environments
- Reduce the risk and cost per claim
- Increase productivity without extra effort
- Optimize underwriting
- Analyze and plan projects with greater efficiency
- Aid hands-on inspections
- Document/analyze conditions over time